

## THE FARRIER



6

BEDROOMS



3

BATH



2

CAR GARAGE



3218

SF

### INCLUDED FEATURES

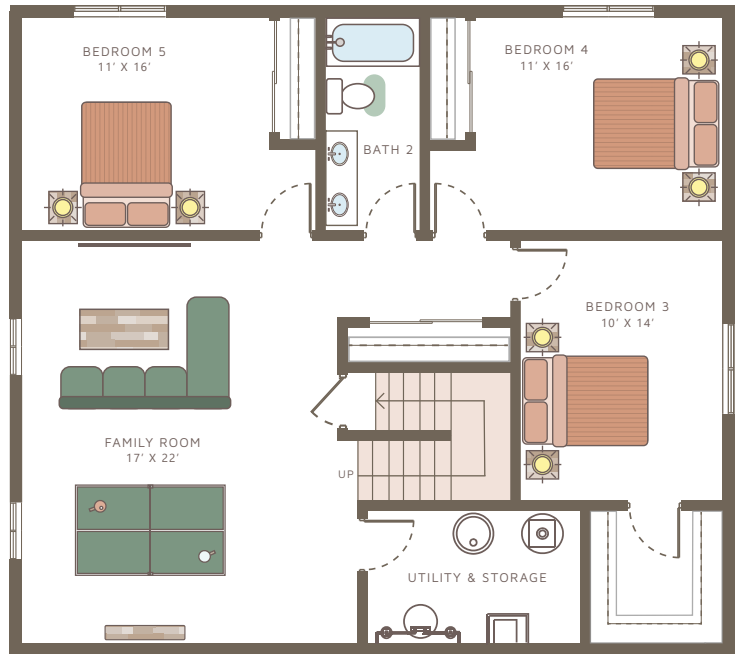
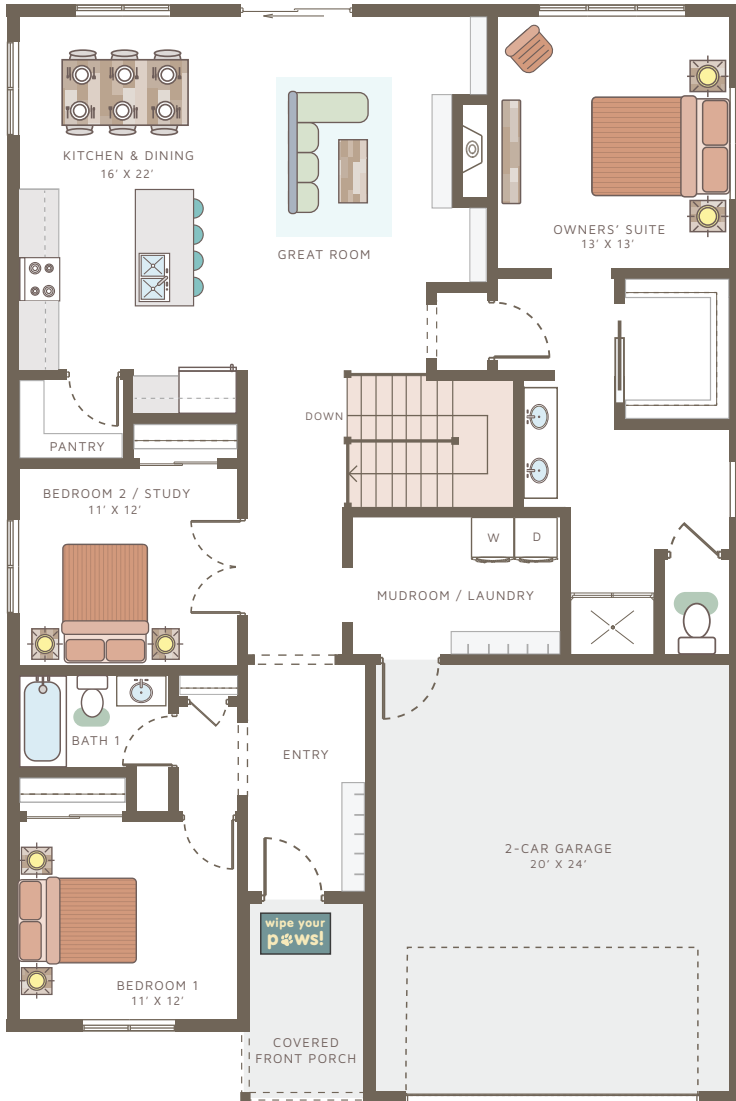
Covered Entry | Timber Frame Details | Owners' Suite On Main Floor  
9' Ceilings On Main Floor | Finished Basement With Family Room  
2 Car Garage | Canyon Creek Cabinets

### OPTIONAL CONSIDERATIONS

Tray Ceiling In Great Room Or Owners' Suite | Patio Door In Owners'  
Suite | 3rd Car Garage | Built-Ins | Garage Door Windows

# THE FARRIER

## MAIN FLOOR



## BASEMENT



### Kitchen Features Canyon Creek Cabinets

Please note: This is an artist rendering, not drawn to scale. House plans subject to alterations without notice. This plan is the exclusive property of Sussex Construction, Inc. Some items shown are upgrades. LAST UPDATED 04/2023.