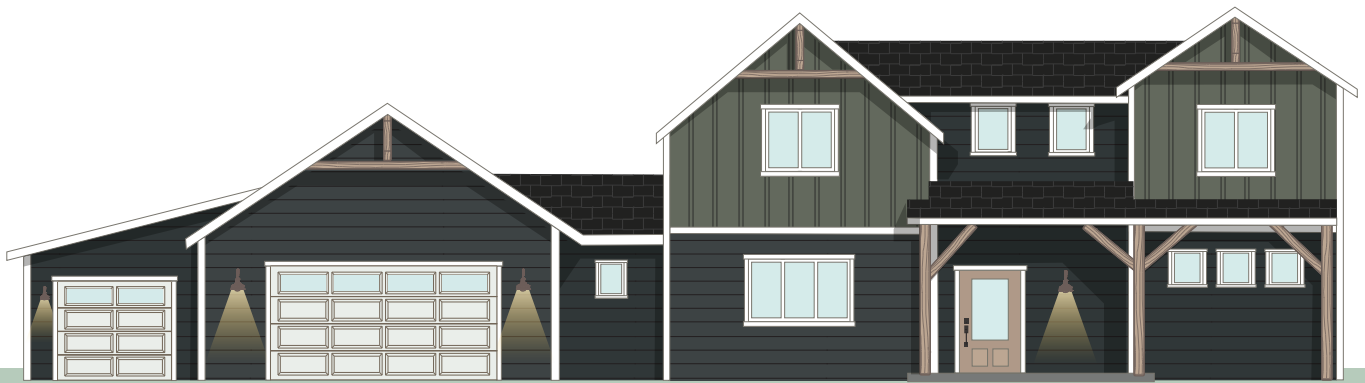


## THE HUNTSMAN



4

BEDROOMS



3.5

BATH



3

CAR GARAGE



2830

SF

### INCLUDED FEATURES

Covered Entry | Timber Frame Details | Owners' Suite On Main floor  
9' Ceilings On Main Floor | 2 Story Great Room | 3 Car Garage  
42" Front Door

### OPTIONAL CONSIDERATIONS

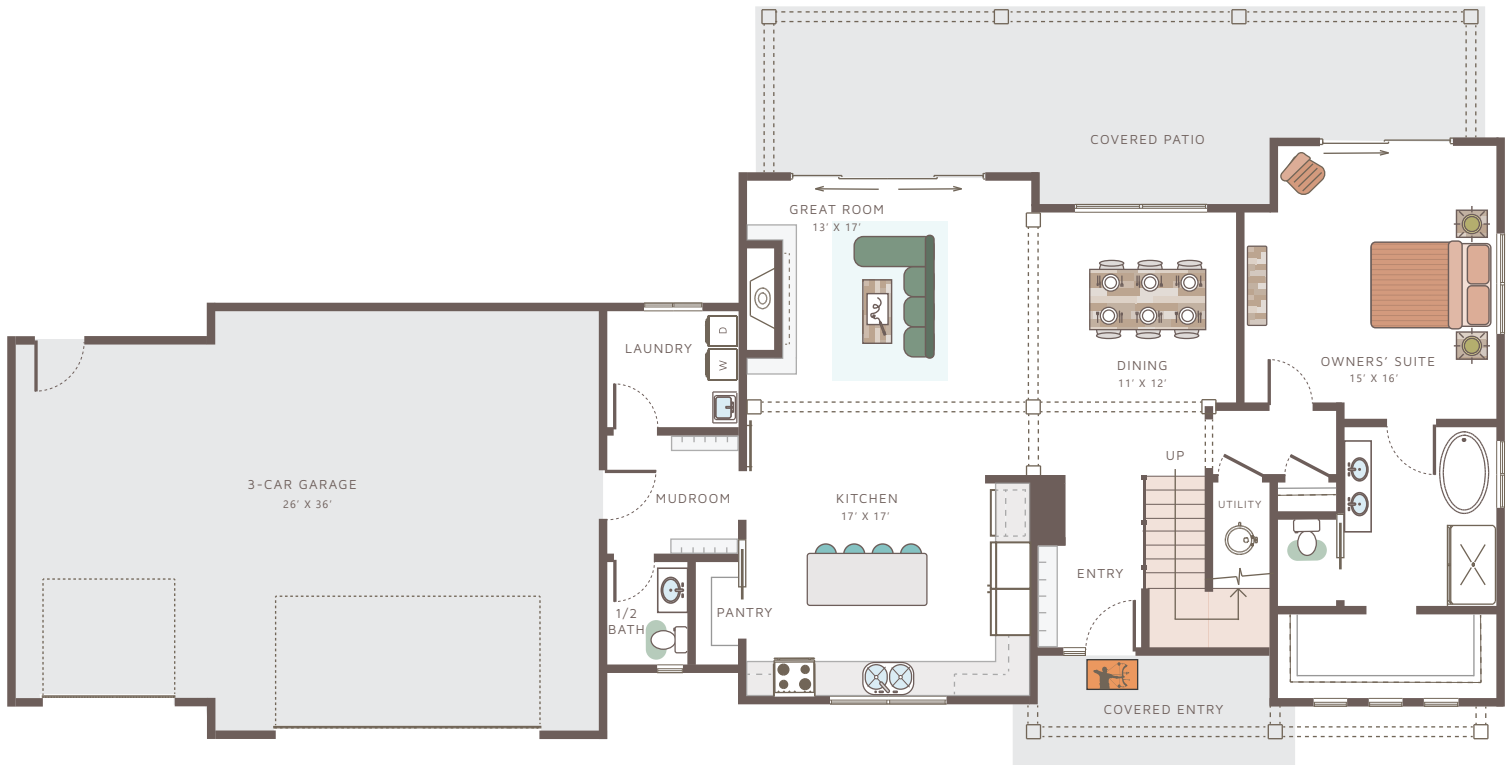
Covered Back Patio | Laundry Sink | Built-Ins | Tub In Owners' Suite  
Garage Door Windows | Metal Roof Accents

# THE HUNTSMAN

## UPPER FLOOR



## MAIN FLOOR



Please note: This is an artist rendering, not drawn to scale. House plans subject to alterations without notice. This plan is the exclusive property of Sussex Construction, Inc. Some items shown are upgrades. LAST UPDATED 10/2022.