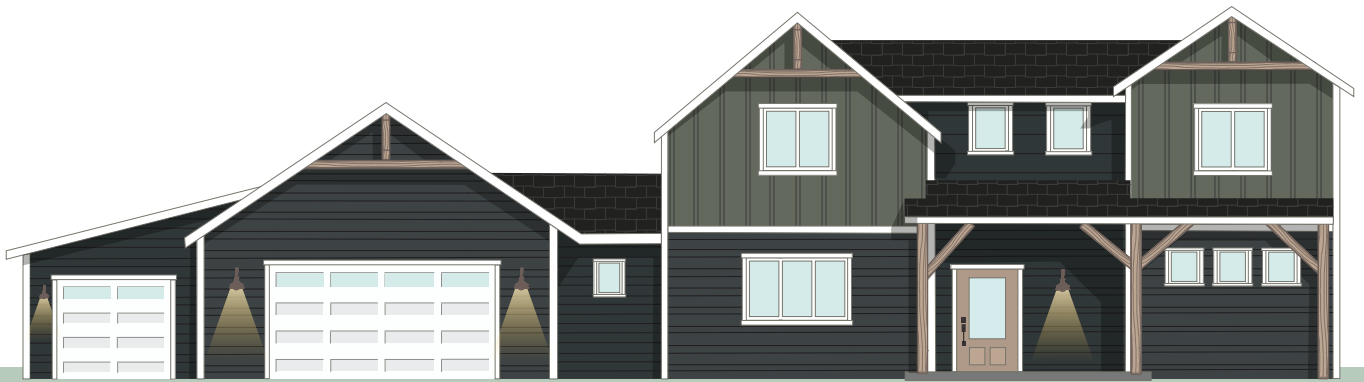


## THE HUNTSMAN



4

BEDROOMS



3.5

BATH



3

CAR GARAGE



2830

SF

### INCLUDED FEATURES

Covered Entry | Timber Frame Details | Owner's Suite On Main Floor  
9' Ceilings On Main Level | 2x6 Exterior Construction  
2 Story Great Room | 3 Car Garage

### OPTIONAL CONSIDERATIONS

Covered Back Patio



# THE HUNTSMAN



Please note: This is an artist rendering, not drawn to scale. House plans subject to alterations without notice. This plan is the exclusive property of Sussex Construction, Inc. Some items shown are upgrades. LAST UPDATED 6/2022.