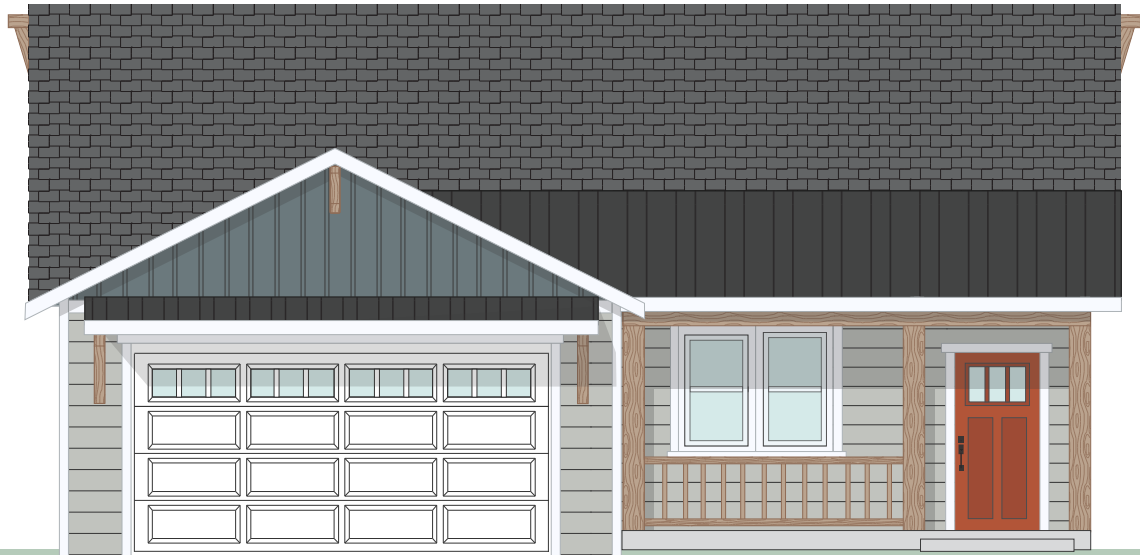


THE FARRIER



3

BEDROOMS



2

BATH



2

CAR GARAGE



1850

SF

INCLUDED FEATURES

Covered Porches | Timber Frame Details | Owners' Suite On Main Floor
Open-Plan Living | 9' Ceilings | 2 x 6 Exterior Construction | Two-Car Garage

OPTIONAL CONSIDERATIONS

Glass Garage Door Windows | Basement | Back Patio

THE FARRIER



*Please note: This is an artist rendering, not drawn to scale. House plans subject to alterations without notice.
This plan is the exclusive property of Sussex Construction, Inc.*