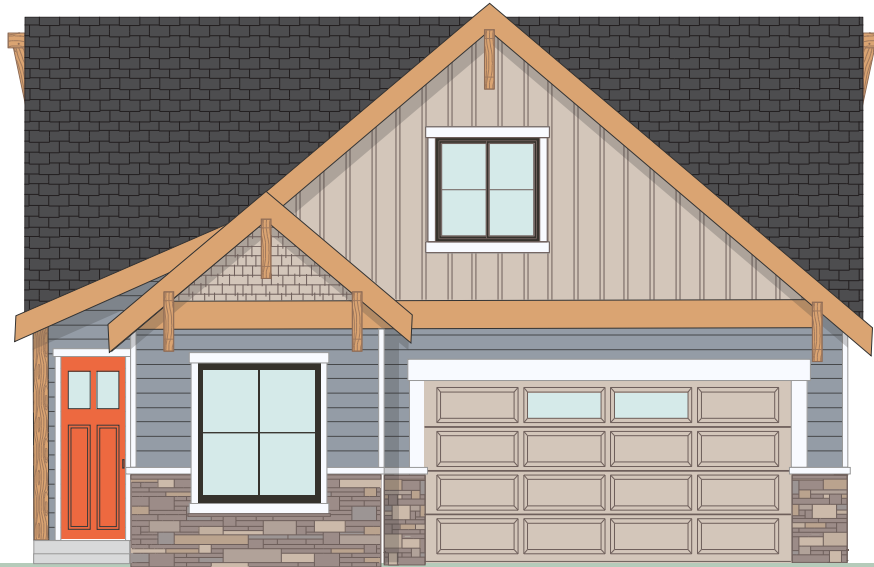


THE BRIDGER



3

BEDROOMS



2.5

BATH



2

CAR GARAGE



2545

SF

INCLUDED FEATURES

Covered Entry | Timber Frame Details | Owners' Suite On Main Floor
Open-Plan Living | 9' Ceilings | 2 x 6 Exterior Construction | Two-Car Garage
Covered Front And Back Porches

OPTIONAL CONSIDERATIONS

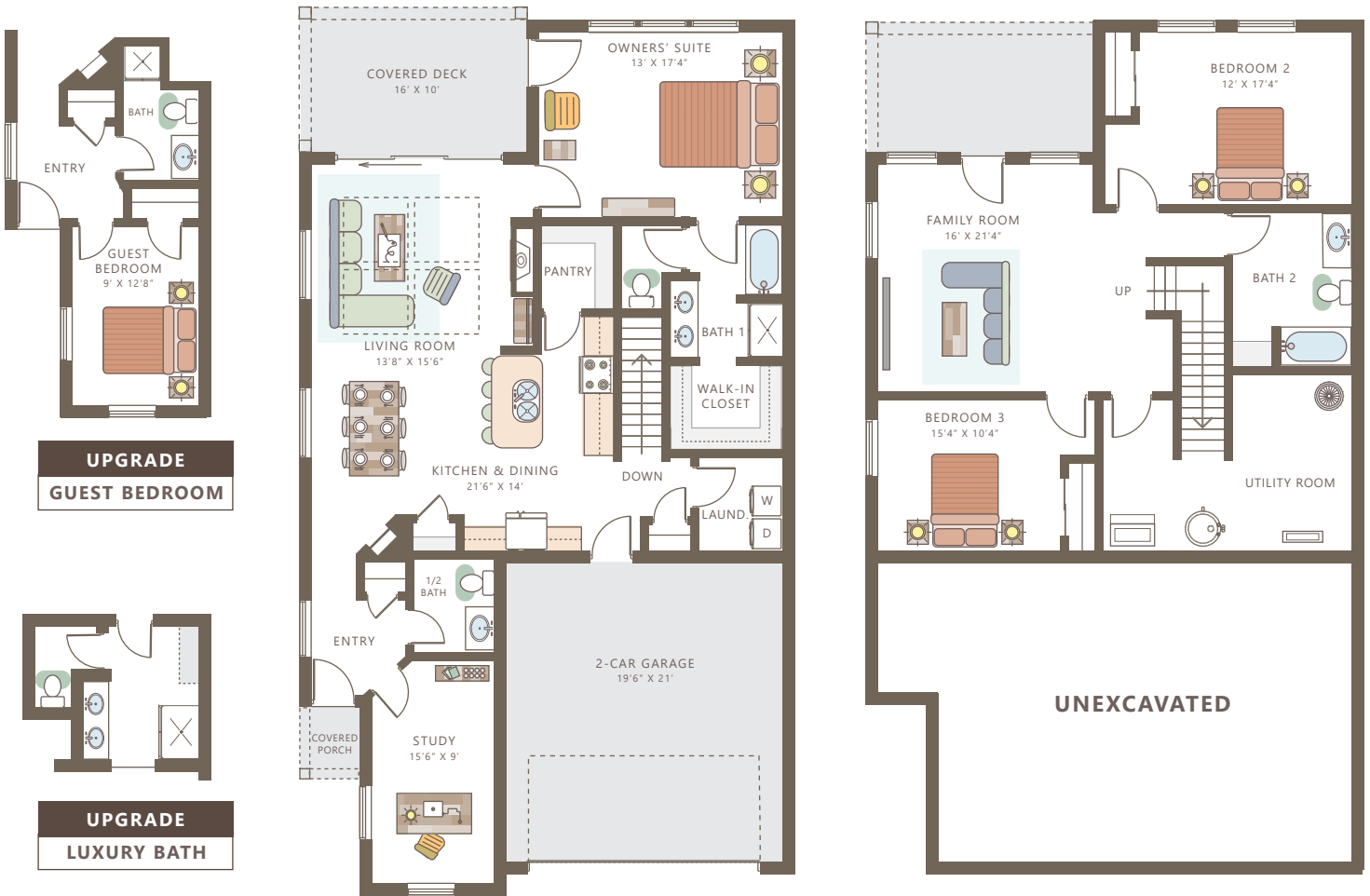
Luxury Bathroom | Forth Bedroom in Place of Study



THE BRIDGER

MAIN FLOOR

LOWER LEVEL



Main Floor: 1400 sf

Lower Floor: 1145 sf

Please note: This is an artist rendering, not drawn to scale. House plans subject to alterations without notice. This plan is the exclusive property of Sussex Construction, Inc.